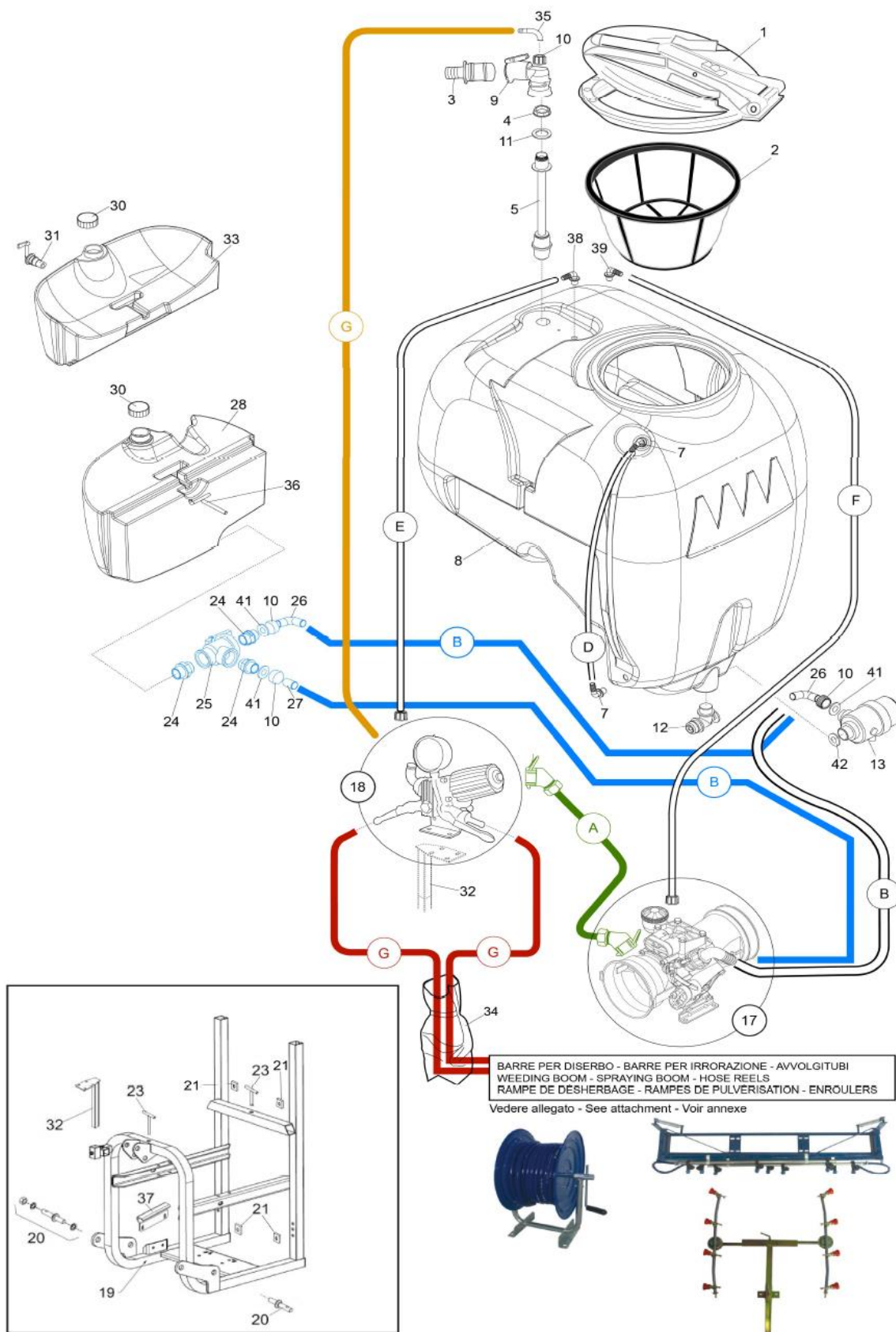


**GP120 - GP200**



**GP120 - GP200**

POS. POS.	CODICE CODE	DESCRIZIONE DESCRIPTION	Q.TA' Q.TY
1	M2602001,5	COPERCHIO RIBALTABILE COMPLETO DIAM. 350 mm - TANK LID	1
2	M2500000,6	FILTRO A SACCO DIAM. 300 mm - FILTER	1
3	K00002001	PORTAGOMMA IN PLASTICA DIAM. 30 mm - COUPLING	1
4	M2001201,2	GHIERA 1"-1/4" - RING-NUT	1
5	T00300002	CORPO AGITATORE - STIRRER BODY	1
7	M8011152	PORTAGOMMA 90° 1/2" DIAM. 16 mm - COUPLING	4
8	M2001201,4	CISTERNA PER GP/ATP120 - 120L TANK	1
8	M2002001,4	CISTERNA PER GP/ATP200 - 200L TANK	1
9	C00000030	CURVA IDROIETTORE A/R DIAM. 3 - HYDROEJECTOR ELBOW	1
10	M2001200,22	GIRELLO 1"-1/4" - RING-NUT	4
10	750670	GIRELLO 1"-1/2" - RING-NUT	4
11	G00002014	GUARNIZIONE PIANA 1"-1/4" - FLAT GASKET	1
12	M2500000,19	VALVOLA DI SCARICO ANTINQUINANTE 1"-1/4" - DRAIN VALVE	1
13	M2500000,9	FILTRO ASPIRAZIONE 1"-1/4" 120L+VALVOLA - SUCTION FILTER+VALVE PAG 58-59	1
13	M2012622	FILTRO ASPIRAZIONE 1"-1/4" 160L+VALVOLA - SUCTION FILTER+VALVE PAG 58-59	1
		PER FILTRO VEDI PAG. - FOR FILTER SEE PAGE #	PAG
17		PER POMPA VEDI PAG. - FOR PUMP SEE PAGE #	PAG
18		PER GR.COM.C/MAN. VEDI PAG. - FOR CONTROL UNIT W/PR.GAUGE SEE PAGE #	PAG
19	M2602002,1	TELAIO SALDATO COMPLETO PER GP120/200 - FRAME FOR GP120/200	1
20	M2500000,3	PERNO BRACCIO DI SOLLEVAMENTO DIAM. 22 mm - PIVOT OF LIFTING ARM	2
21	M2602000,60	SPESSORE STAFFA ANCOR. ACC. - SPACER FOR ACCESS.MOUNTING BRACKET	4
23	M2602002,018	TIRANTE FISS. CIST.ANT-POST.120/200-FRONT&REAR TIE-ROD FOR TANK	2
24	M8056301	NIPPLO 1"-1/4" - NIPPLE	3
24	M8058301	NIPPLO RIDOTTO 1"-1/4" * 1"-1/2" - NIPPLE	3
25	M2454236	VALVOLA 3 VIE 1"-1/4" - 3-WAY VALVE	1
26	M2600000,12	PORTAGOMMA CURVO DIAM. 22mm 1"-1/4" - ELBOW	2
26	M2500000,10	PORTAGOMMA CURVO DIAM. 25 mm 1"-1/4" - ELBOW	2
26	M2600000,12	PORTAGOMMA CURVO DIAM. 22 mm 1"-1/4" - ELBOW	2
26	M2500000,10	PORTAGOMMA CURVO DIAM. 25 mm 1"-1/4" - ELBOW	2
27	M8002302	TUBETTO DRITTO DIAM. 30 mm 1"-1/4" - STRAIGHT TUBE	1
28	M2602025,38	CISTERNA 25L LAVACIRCUITO - 25L TANK FOR CIRCUIT WASHING	1
30	M2602000,75	TAPPO CISTERNA LAVAMANI - CAP OF HAND WASH TANK	2
31	M2603000,3	RUBINETTO 3/4" D. 16 mm PER CIST. LAVAMANI - TAP OF HAND WASH TANK	1
32	M2500000,2	ASTA SUPPORTO GRUPPO COMANDO - SUPPORT FOR CONTROL UNIT	1
33	M2602015,38	CISTERNA LAVAMANI 15L TN - 15L HAND WASH TANK	1
34	GPVC60	GUAINA PROTEZIONE TUBI PVC DIAM. 60mm - PROTECTIVE SHEATH FOR HOSE	1
36	M2602002,184	TIRANTE FISSAGGIO CIST. LAVACIRC.25L TN - TIE-ROD FOR FIXING THE TANK	1
37	M2602002,10	STAFFA FISS. SUPP. CIST. LAV.25L TN - FIXING BRACKET FOR 25L TANK SUPPORT	1
38	M2000000,11	RACCORDO SCARICO DIAM. 15mm - DRAIN COUPLING	1
39	M2500000,11	RACCORDO SCARICO DIAM. 20mm - DRAIN COUPLING	1
41	550350	OR - O-ring	1
42	320030	OR - O-ring	1
A	M2105021	TUBO COLLEG.POMPA-DISTRIB. 10x17 50bar - CONNECTION PIPE PUMP-DISTRIB.	m
A	M2138021	TUBO COLLEG.POMPA-DISTRIB. 13x21 80bar - CONNECTION PIPE PUMP-DISTRIB.	m
A	M2208020	TUBO COLLEG.POMPA-DISTRIB. 20x30 20bar - CONNECTION PIPE PUMP-DISTRIB.	m
B	M2190021	TUBO ASPIRAZIONE POMPA DIAM. 20 mm - 20 mm SUCTION HOSE FOR PUMP	m
B	M2250021	TUBO ASPIRAZIONE POMPA DIAM. 25 mm - 25 mm SUCTION HOSE FOR PUMP	m
B	M2300021	TUBO ASPIRAZIONE POMPA DIAM. 30 mm - 30 mm SUCTION HOSE FOR PUMP	m
D	M2001201,12	TUBO LIVELLO GRADUATO 120L - GRADUATED LEVEL	1
D	M2602001,20	TUBO LIVELLO GRADUATO 200L - GRADUATED LEVEL	1
E	M2160021	TUBO SCARICO DISTRIB. DIAM. 16 mm - 16 mm DRAIN HOSE FOR DISTRIBUTOR	m
E	M2190021	TUBO SCARICO DISTRIB. DIAM. 20 mm - 20 mm DRAIN HOSE FOR DISTRIBUTOR	m
F	M2160021	TUBO SCARICO VALV. SIC. DIAM. 16 mm - 16 mm DRAIN HOSE FOR SAFETY VALVE	m
G	M2105021	TUBO ALIM. BARRE/AVVOLG. 10x17 50bar - SUPPLY HOSE FOR BOOMS/HOSE R.	m
G	M2108021	TUBO ALIM. BARRE/AVVOLG. 10x19 80bar - SUPPLY HOSE FOR BOOMS/HOSE R.	m
G	M2138021	TUBO ALIM. BARRE/AVVOLG. 13x21 80bar - SUPPLY HOSE FOR BOOMS/HOSE R.	m