

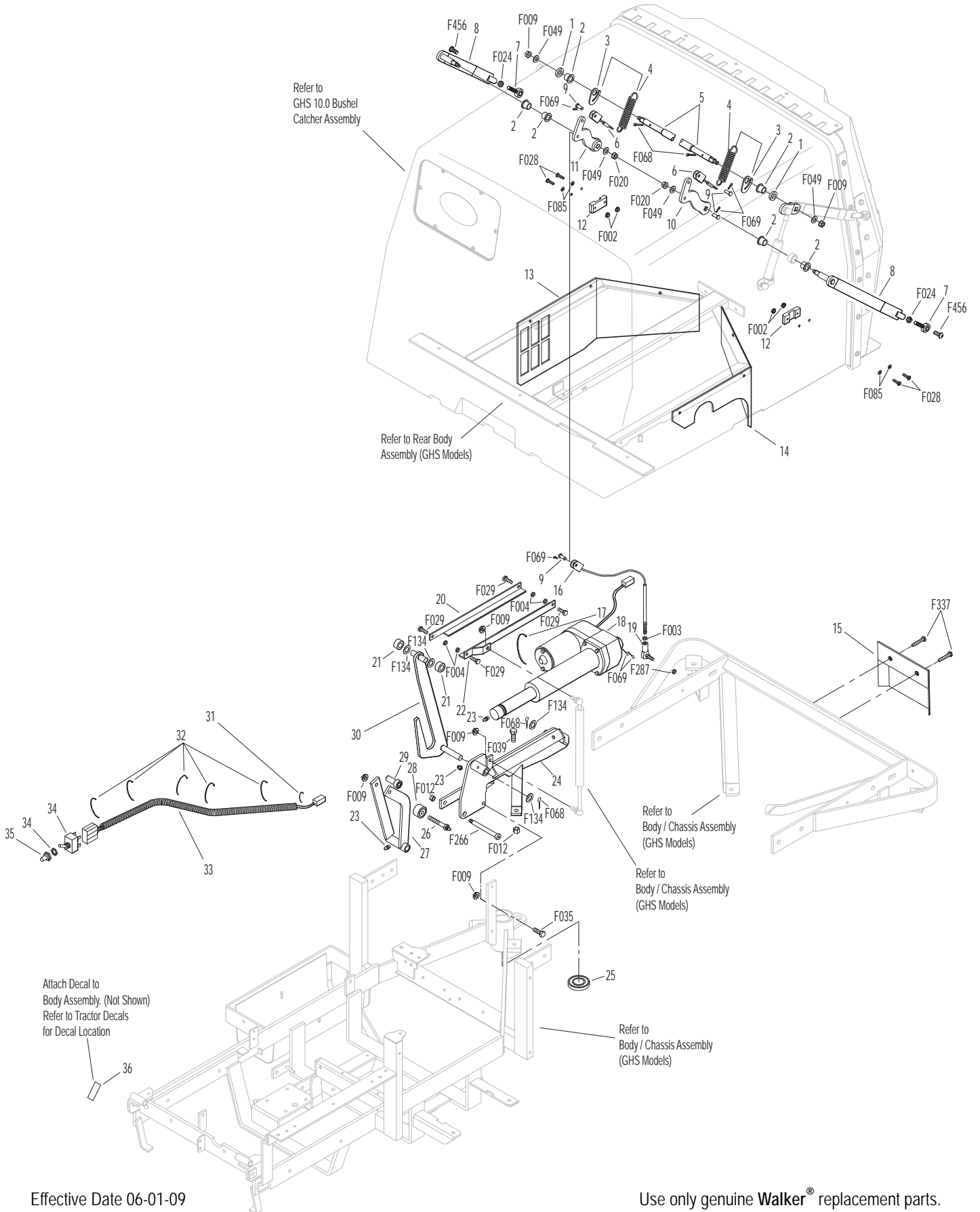
POWER DUMP KIT (10.0 BUSHEL GHS MODELS ONLY)

ITEM NO.	PART NO.	DESCRIPTION	NO. REQ'D	ITEM NO.	PART NO.	DESCRIPTION	NO. REQ'D	
Kit 8620-2 Power Dump Option / Kit (10.0 Models Only) Includes Items # 1-36, fasteners listed and instructions. May be ordered as a factory-installed option or as a kit for dealer installation. Contact your Walker dealer.				Fasteners				
1	5103-7	Outside Torsion Bushing	2	F002		10-24 Keps Nut	4	
2	7620-3	Pivot Bushing (1/2 x 9/16)	6	F003		1/4-28 Hex Nut	2	
3	8623-5	Torsion Spring Hook	2	F004		1/4-20 Keps Nut	4	
4	5221-2	Extension Spring (3/4 x 3-1/2")	2	F009		5/16-18 Whiz Locknut	6	
5	8608-9	Torsion Bar	1	F012		3/8-16 Keps Nut	2	
6	8623-3	Extension Spring Cable	2	F020		5/16-18 ESNA Nut	2	
7	5214-12	Ball Joint (5/16-24)	2	F024		5/16-24 Jam Nut	2	
8	8607-10	Lower Arm/Power Dump	2	F028		10-24 x 3/4 PPHMS	4	
9	7523-2	Clevis Pin W/Hole (1/4 x 5/8)	4	F029		1/4-20 x 1/2 Hex Bolt	4	
10	8623-7	Inner Power Dump Arm, LH	1	F035		5/16-18 x 1-1/4 Hex Bolt	1	
11	8623-6	Inner Power Dump Arm, RH	1	F039		3/8-16 x 1-1/4 Hex Bolt	2	
12	7620-6	Cable Guide	2	F049		5/16 SAE Washer	4	
13	8105-4	Rear Body Panel, RH	1	F068		1/8 x 1 Cotter Pin	4	
14	7104-5	Rear Body Panel, LH	1	F069		3/32 x 1/2 Cotter Pin	8	
15	8620-5	Guard, 10.0 Power Dump Motor	1	F085		3/16 Rivet Backup Washer	4	
16	8623-2	Power Dump Cable, 10.0	2	F134		AN960816L Washer	4	
17	5975-7	Cable Tie (50# x 11")	1	F266		1/2 x 2-3/4 Shoulder Bolt	1	
18	7721	Linear Actuator (13.898)	1	F287		1/4-28 Keps Nut	2	
19	5552	Ball Joint (1/4-28)	2	F337		1/4-20 x 5/8 Self-Tap Bolt	2	
20	7628-1	Channel Angle, RH	1	F456		5/16-18 x 3/4 SBH Cap Screw, SS	2	
21	7620-9	Roller Wheel	2					
22	7629	Channel Angle, LH	1					
23	5830	Grease Fitting	3					
24	7636-1	Actuator Mount, 10.0	1					
25	5842-1	Washer (1.0 ID x 1.350 OD)	1					
26	7624-1	Roller Bearing Bolt	1					
27	7627	Front Actuator Mount	1					
28	7624	Sealed Needle Bearing	1					
29	7630-3	Ram Pivot and Spacer	1					
30	7625	Fork	1					
31	5975-1	Cable Tie (18# x 3-3/4")	1					
32	5975-3	Cable Tie (50# x 7")	5					
33	7622	Wire Harness	1					
34	6623	Toggle Switch	1					
35	6623-1	Switch Boot	1					
36	7633	Decal, Power Dump	1					

NOTE: Two F009 Fasteners are reused from the Rear Gas Spring Assembly. Refer to **REAR BODY ASSEMBLY (GHS MODELS)**, Page 6.

NOTE: Refer to **ELECTRICAL CONNECTORS**, Page 42 for identification of all Electrical Wiring Service Parts.

POWER DUMP KIT (10.0 BUSHEL GHS MODELS ONLY)



Effective Date 06-01-09

Use only genuine Walker® replacement parts.